



# IWRB Managed Recharge Program

---

## Environmental Resources Technical Working Group

**Wesley Hipke**

IWRB Recharge Program Manager

November 6, 2019



# IWRB Natural Flow Managed Recharge – 2019/2020

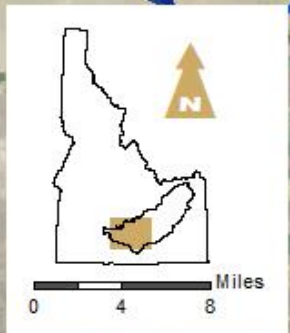
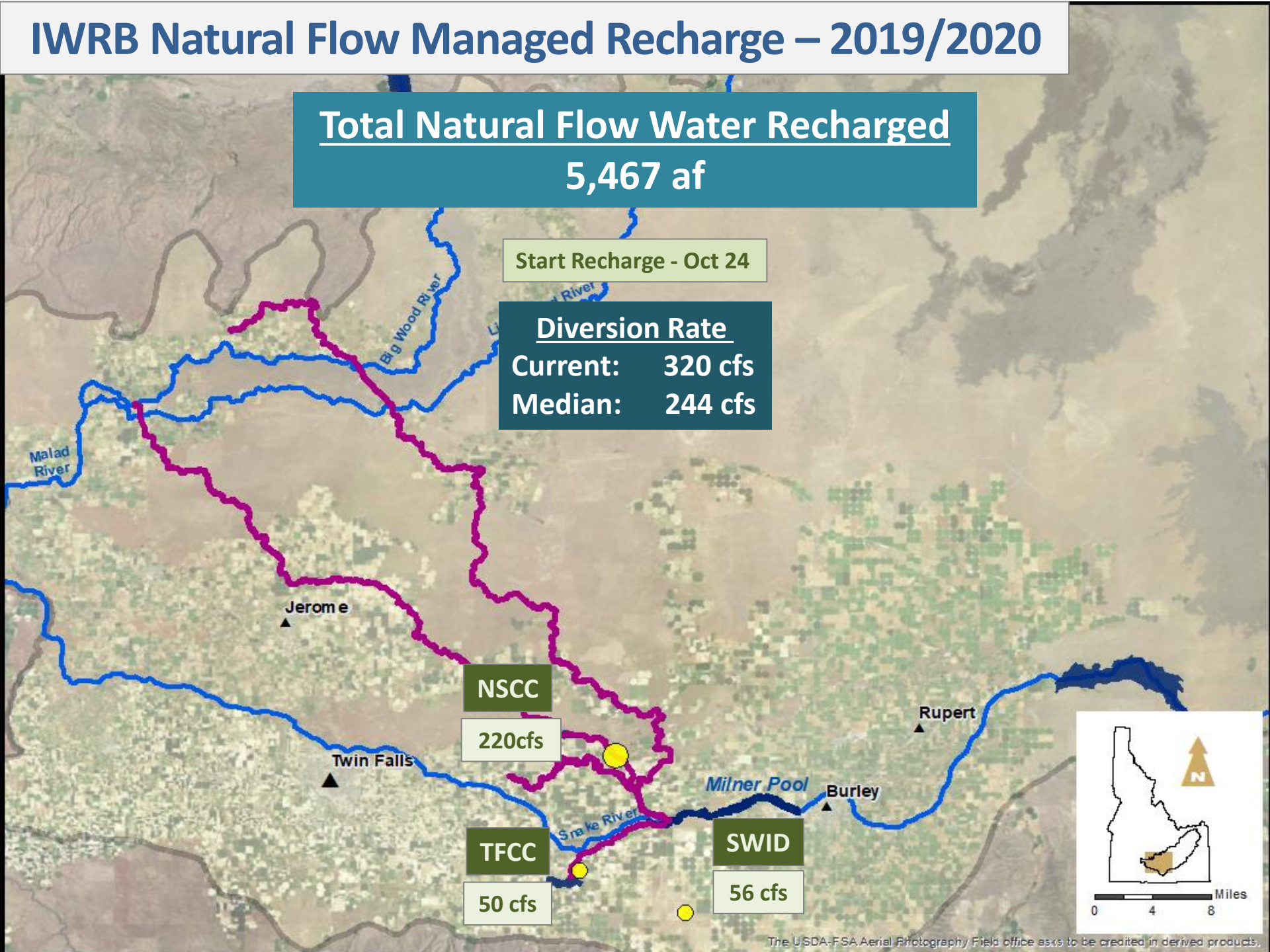
Total Natural Flow Water Recharged  
5,467 af

Start Recharge - Oct 24

Diversion Rate

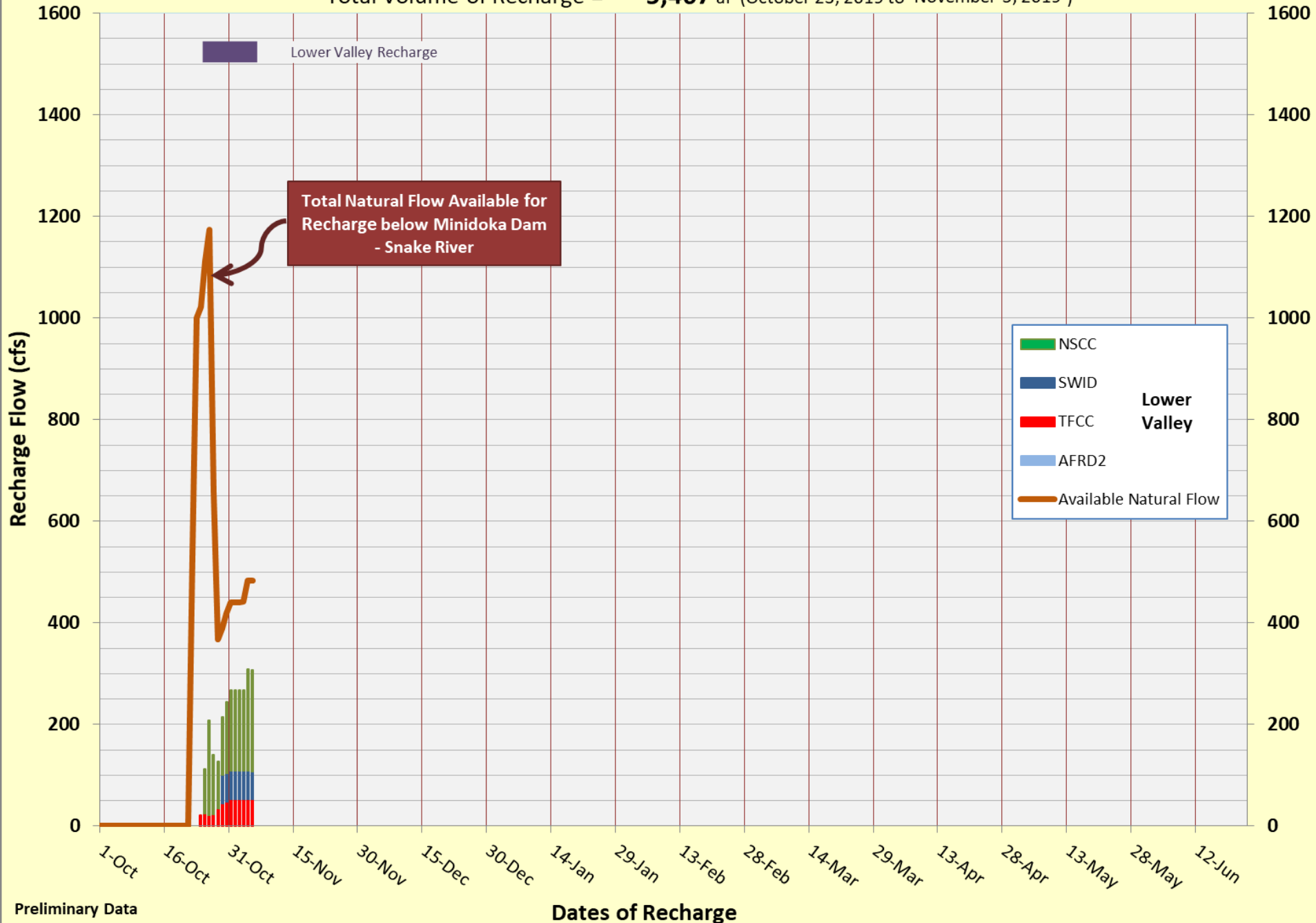
Current: 320 cfs

Median: 244 cfs



# Natural Flow - IWRB Recharge Rates - 2019/2020 Season

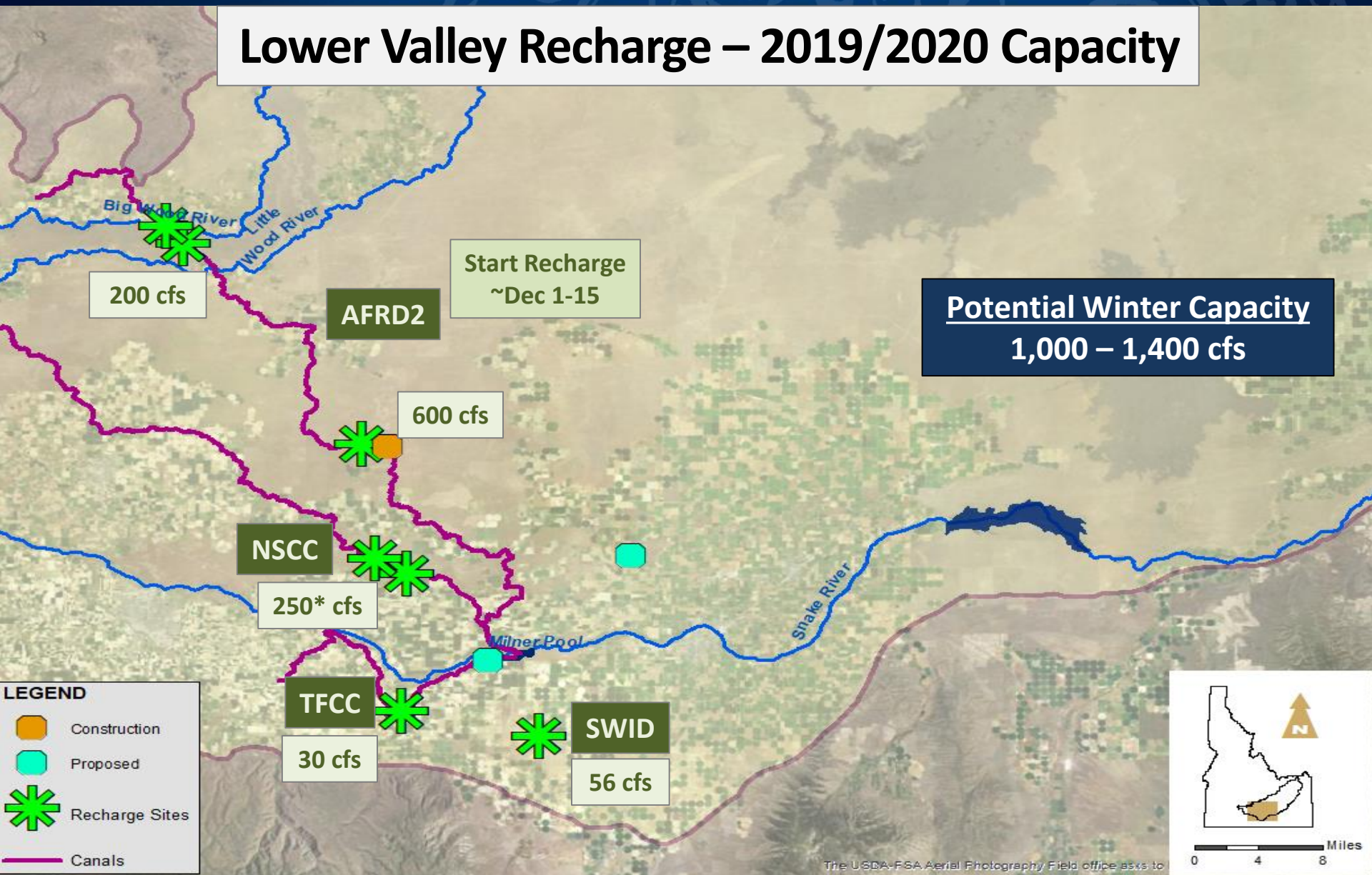
Total Volume of Recharge = **5,467** af (October 23, 2019 to November 5, 2019 )



Preliminary Data



## Lower Valley Recharge – 2019/2020 Capacity



**Potential Winter Capacity**  
1,000 – 1,400 cfs

**LEGEND**

- Construction
- Proposed
- Recharge Sites
- Canals

## ESPA Managed Recharge Program

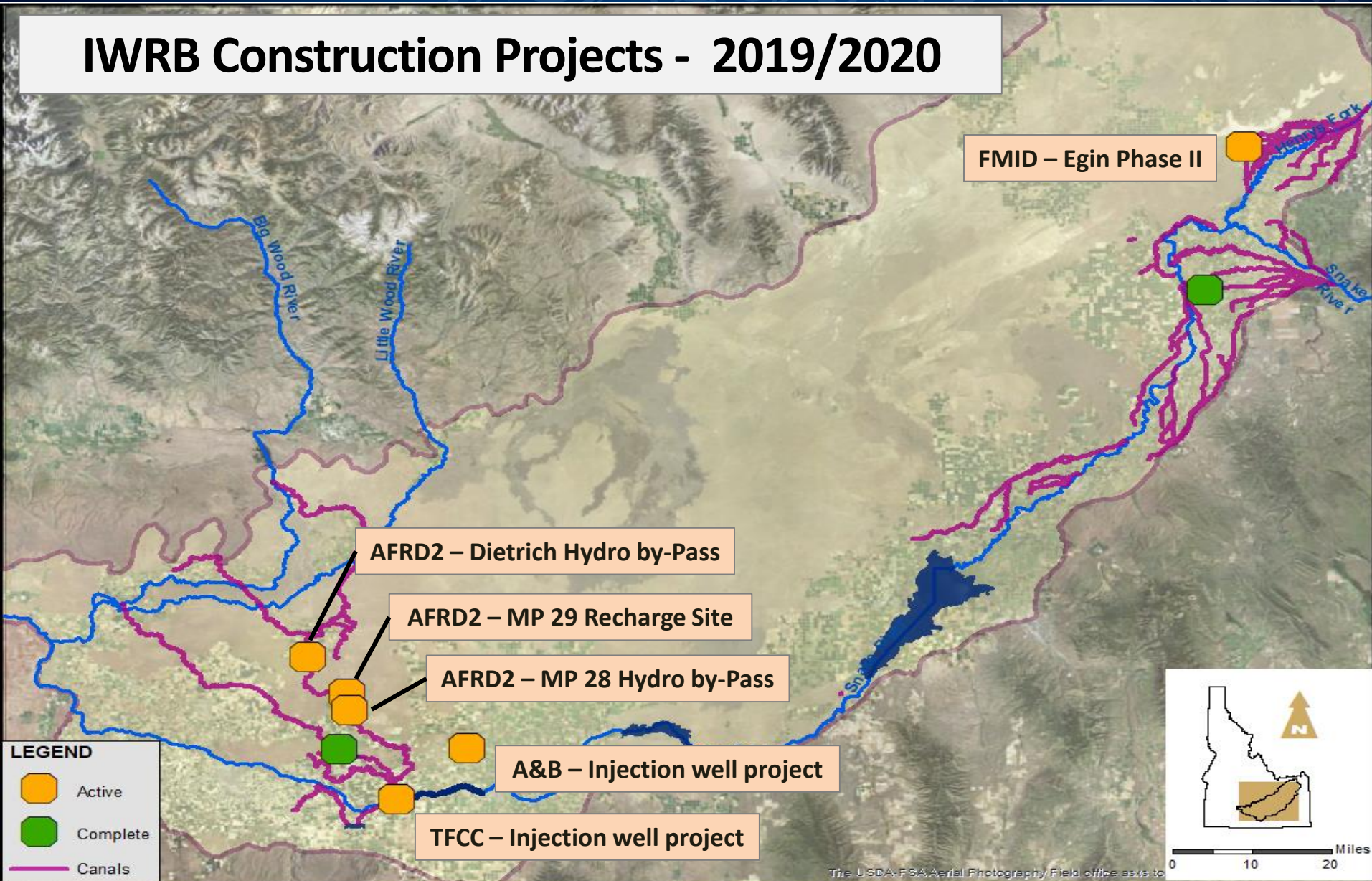
### Potential Impacts to Recharge:

- Water Availability
- Weather
  - Freezing Conditions
  - Warming Conditions
- Canal Operations / Infrastructure Issues
- Others??





## IWRB Construction Projects - 2019/2020







# IWRB Managed Recharge for SWC Agreements – Fall 2019

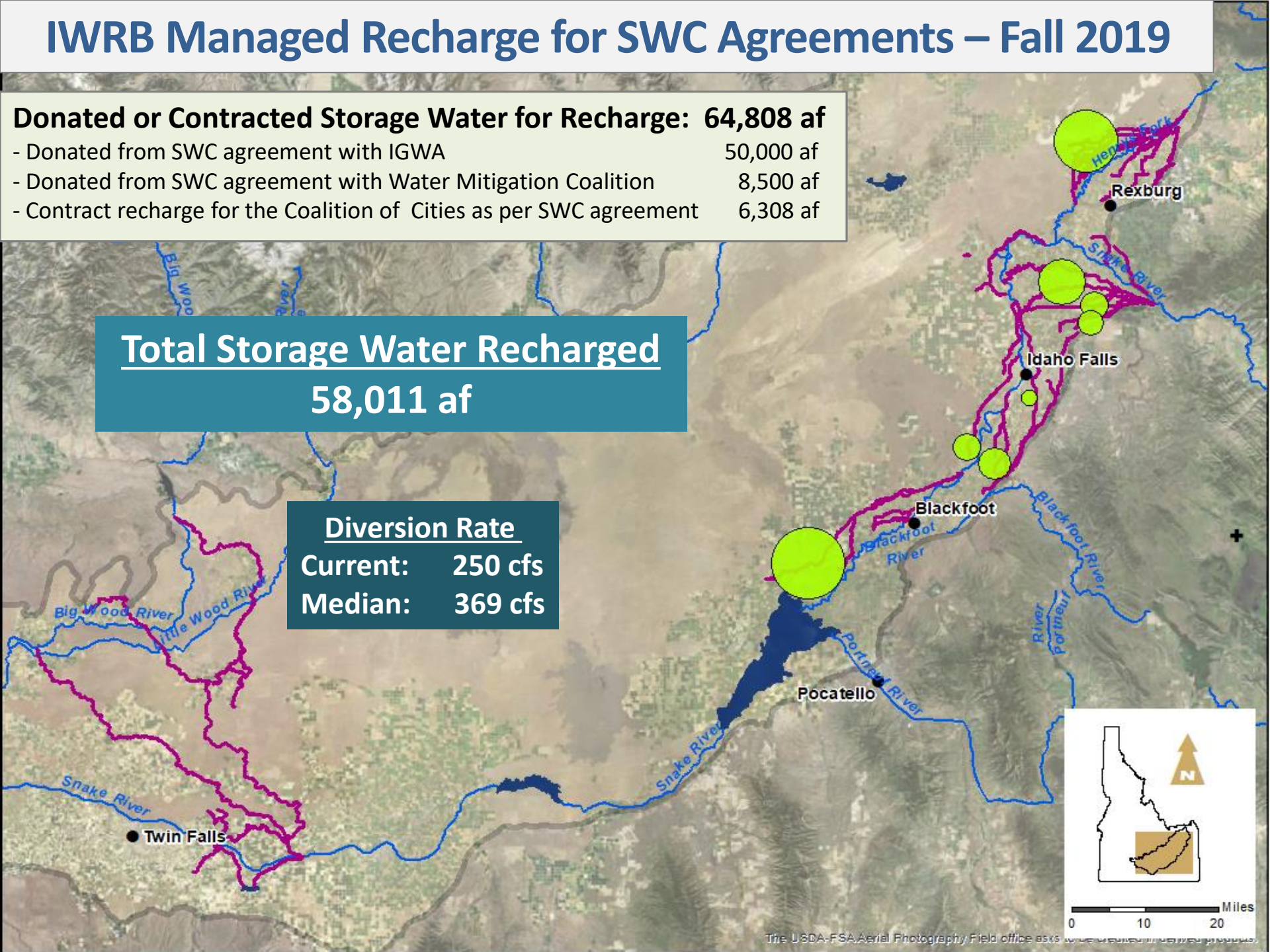
**Donated or Contracted Storage Water for Recharge: 64,808 af**

- Donated from SWC agreement with IGWA 50,000 af
- Donated from SWC agreement with Water Mitigation Coalition 8,500 af
- Contract recharge for the Coalition of Cities as per SWC agreement 6,308 af

**Total Storage Water Recharged**  
**58,011 af**

**Diversion Rate**

**Current: 250 cfs**  
**Median: 369 cfs**





# Questions

